

# **SURE-PANEL**

## **SECTION 05 58 13**

### **ALUMINUM PLATE COLUMN COVER**

#### **Sure-Panel® Reveal Joint Column Cover**

#### **PART 1 – GENERAL**

##### **1.1 RELATED DOCUMENTS**

The drawings and provisions of the General Conditions, and the sections included under Division 1 specification sections, apply to this section

##### **1.2 SUMMARY**

This section includes aluminum plate column covers that are used as the exterior and interior cladding

##### **1.3 PERFORMANCE REQUIREMENTS**

- A. Structural Performance: provide aluminum plate column covers capable of withstanding the effects of normal stress from thermal movements and load effects from: wind loads, dead loads, and snow loads; without evidence of permanent defects of the assembly.
- B. System design for a mechanically fastened assembly to substructure
  - 1. Dead Load as required by applicable building code
  - 2. Live Load as required by applicable building code
  - 3. Wind Load: uniform pressure (define velocity pressure) of (insert design criteria) pound/square foot, acting inward and outward.
  - 4. Thermal Movements: provide column assemblies that allow for thermal movements to prevent buckling, opening of joints and other thermal effects.
- C. Design the column for a mechanically fastened assembly to substructure
- D. Design column tolerances to manufacturer's standard tolerances
- E. Column joints will be sealed appropriately using back rod and approved caulk

##### **1.4 SUBMITTALS**

- A. Products Data: Manufacturer's product literature
- B. Finish Samples: Submit color samples for final approval
- C. Shop Drawings: Submit shop drawings showing plans, sections, and elevation details

##### **1.5 QUALITY ASSURANCE**

- A. Manufacturer Qualifications: Minimum of five years' experience in manufacturing of metal column cover products
- B. Installer Qualifications: Acceptable to manufacturer

- C. Engineering Qualifications: Provide engineering calculations for the column assembly to be prepared by an engineer registered in the state the project is located

## **1.6 DELIVERY, STORAGE AND HANDLING**

- A. Delivery: Deliver column covers in manufacturer's crates packed for long haul transit
- B. Storage: Store materials in a dry and safe area
- C. Handling: Handle Materials to avoid any damage to materials and finishes

## **1.7 WARRANTY**

- A. The contractor must warrant the materials to be free of defects in accordance with the general conditions. Finish warranty shall be extended by paint manufacturer's standard warranty

## **PART 2 – PRODUCTS**

### **2.1 MANUFACTURER**

- A. Sure-Panel®, 11100 Jefferson Highway N Suite B, Champlin, Minnesota 55316, Telephone: (952) 938-3356, [www.Sure-Panel.com](http://www.Sure-Panel.com), Sure-Panel® Reveal Joint Column Cover
- B. Approved equal submitted for approval 10 days prior to bid

### **2.2 MATERIALS**

- A. Aluminum Sheet: ASTM B209, Aluminum Association specification
  - 1. 3003-H14/3105-H14/5052-H32 for painted finishes
  - 2. 5005-H34 for anodized finish
- B. Thickness: .125" (1/8") unless otherwise specified

### **2.3 FABRICATION**

- A. Tolerances
  - 1. Column surfaces shall be free of blemishes, scratches or marks caused during fabrication process
  - 2. Roll Columns to a true radius with return attachment legs formed to accommodate proper installation

### **2.4 ACCESSORIES**

- A. All fasteners shall be stainless steel

### **2.5 FINISHES**

- A. Paint:
  - 1. Coating shall be a coil Applied Fluorocarbon Resin Utilizing a 70% Kynar 500/Hylar 5000 resin

2. Color as selected by owner from paint manufacturer's standard colors or Custom colors as specified
  3. Material to be painted in accordance with either AAMA specification 2605 or 2604
- B. Anodized:
1. Class I, Clear Finish: AA-M12C22A41, mechanical finish, nonspecular as fabricated. Coating to have an anodic coating of 0.7 mil (0.018 mm) thickness
  2. Class I, Color Finish: AA-M12C22A42/A44, mechanical finish, nonspecular as fabricated. Color to be determined by Owner. Coating to have an anodic coating of 0.7 mil (0.018) thickness

## **PART 3 – EXECUTION**

### **3.1 PREPARATION**

- A. Coordinate drawings, diagrams, and instructions for installation

### **3.2 INSTALLATION**

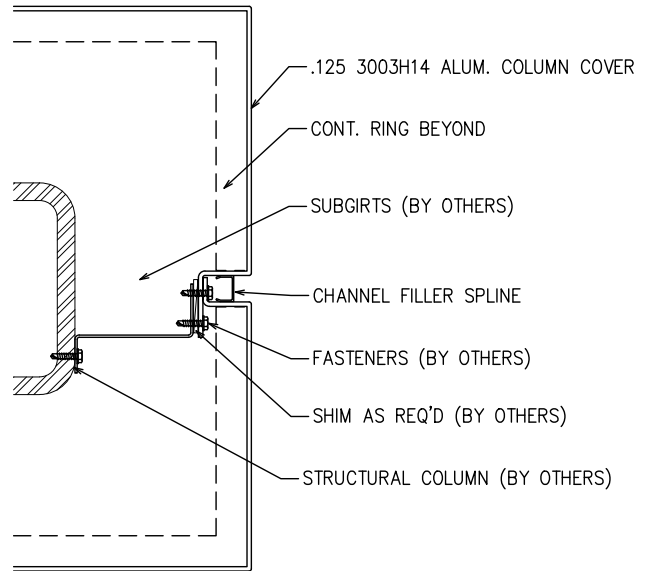
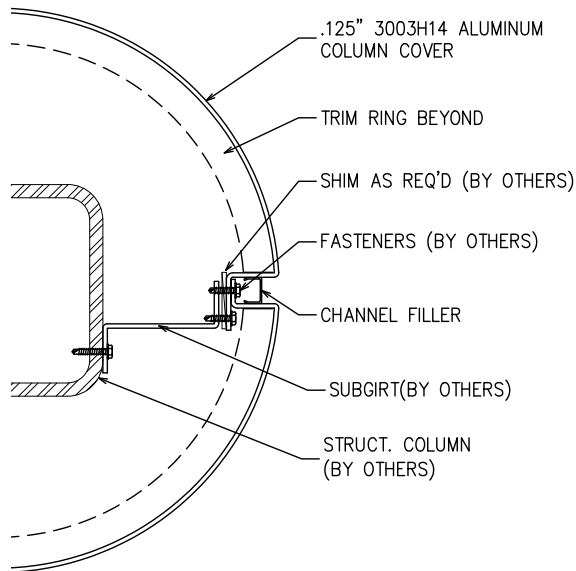
- A. Install column cover plumb and level per shop drawings detailing
- B. Isolation tape or shim shall be installed where dissimilar materials come in contact

### **3.3 CLEANING AND PROTECTION**

- A. Clean exposed surfaces after installation per manufacturer's recommendation
- B. Touch up minor abrasions in finish with touch up paint supplied by finish applicator



## Sure-Panel® Reveal Joint Column Cover System Round or Square

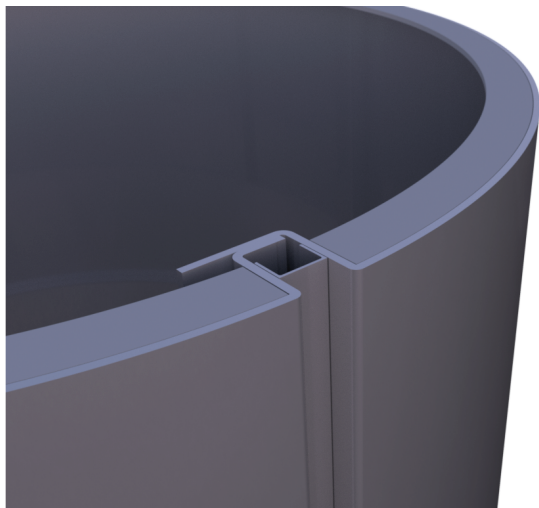


### Materials

3003 H14 (Painted): .090-.125" Aluminum  
 5005AQ (Anodized): .090-.125" Aluminum  
 ACM: 4mm or 6mm FR Core  
 304 Stainless Steel: 16 GA  
 316 Stainless Steel: 16 GA

### Finishes

Standard: PVDF / Kynar  
 Powder Coat  
 Primed or Chromate  
 Anodized  
 Brushed Stainless  
 Mill



### Column Sizes

Max Length Round: 15' (over 15' require stack joint)  
 Max Length Square: 16' (over 16' require stack joint)  
 Min Diameter: 8"  
 Covers Exceeding 34" diameter require vertical joints  
 Covers Exceeding 26" Square require vertical joints

### Panel Weights (approximate)

4mm Fr Core: 1.56 #/SF  
 6mm Fr Core: 2.23 #/SF  
 .080: 1.14 #/SF  
 .090: 1.28 #/SF  
 .125: 1.78 #/SF  
 16 GA SS: 2.5 #/SF